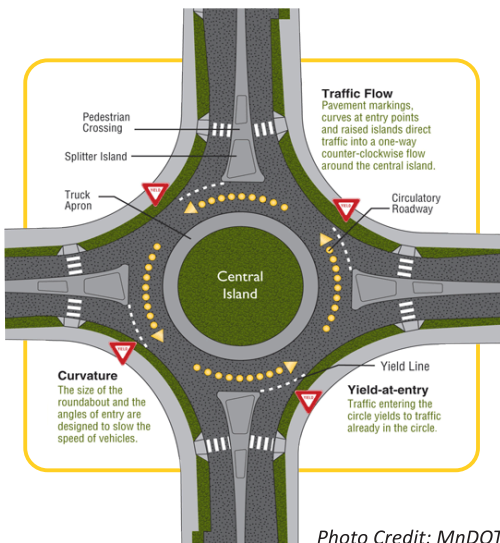


WHY RISK IT?



THE RISKS OF RESIDENTIAL INTERSECTIONS



URBAN AREAS

Over 90% of pedestrian casualty collisions in Alberta occur in urban areas. Traditional intersections, often with traffic signals or stop signs, have multiple points where vehicles and pedestrians can enter the intersection from different directions, creating a higher number of potential conflict points. Roundabouts force traffic to travel in a circular path, reducing the number of potential conflict points.

ROUNDABOUT SAFETY IMPROVEMENTS

- A traditional intersection has 24 vehicle-to-pedestrian conflict points, where a roundabout has only 8.
- Pedestrians only need to worry about vehicles coming from one direction of travel at a time.
- Roundabouts are used as a speed control measure forcing drivers to slow down and drive with increased awareness.
- Drivers' stopping distance is improved significantly at slower speeds, enhancing pedestrian and motorist safety.

ROUNDABOUTS CAN SAVE LIVES

AB PEDESTRIAN SAFETY STATS

Over 40% of the drivers involved in pedestrian casualty collisions failed to yield the right of way to the pedestrian.

When compared to other types of intersections, roundabouts provide a 90% reduction in fatalities, an 80% reduction in injuries, and a 40% reduction in the total number of collisions.

IMMEDIATE SPEED IMPACT

The introduction of a residential roundabout directly and immediately reduces the speed of vehicles.

Roundabouts serve as a free-flowing, consistent, low-speed option to speed control compared to stop signs, yield signs and speed bumps.

CROSSING SAFETY

In residential areas, roundabouts have the added benefit of slowing traffic in neighbourhoods for pedestrians and cyclists making residential roads safer, quieter and more accessible.

Pedestrians only need to cross one direction of traffic at a time, decreasing the crossing distances of active traffic.

References:

Alberta Traffic Collision Statistics 2021 - Traffic Safety, Alberta Transportation and Economic Corridors
Government of Alberta - All About Roundabouts